

# magazine

Edition 01/2021

**GHARIENI**

AMARA

HIGHLIGHT:

Gharieni leads the way in touchless technologies

SPECIAL:

Scientific study on Spa.Wave and Quartz table reveals promising results

Gharieni opens flagship Irish spa



# SPA TECHNOLOGY FOR THE NEW DECADE

Gharieni  
Celliss



Revolutionary anti-cellulite treatment and body contouring for fast and efficient results.

Gharieni  
MLX i<sup>3</sup>Dome



The Ultimate Detox Booster: Holistic triple-detox treatment using Far-Infrared, Plasma and Light.

100% TOUCHLESS TECHNOLOGY  
CAN BE COMBINED WITH YOUR REGULAR TREATMENTS!

**GHARIENI**  
www.gharieni.com

# A year of challenges



**Sammy Gharieni**  
CEO, Gharieni Group

**T**his past year has been a challenge to everyone around the world, but the spa, wellness and aesthetics industry – as well as the travel industry as a whole – has been hit particularly hard. With planes grounded and borders closed, hotels and spas have had to rethink how they attract customers, and to reach out to a new local market. They've also had to come up with a whole new set of protocols, hygiene standards, and ways to reassure customers that a visit to the spa is safe.

For us at Gharieni, things have also been different. Those of you who know me know how strange it is for me to not be on an airplane on any given day or week – let alone for most of the year! I've missed seeing my customers and getting to visit their spas in person, but this time has also meant a chance for us to think about how we can best help our industry in the midst of a pandemic.

I've always been proud of the innovative concepts that Gharieni is known for, but never more so than this year. We were able to quickly shift some of our manufacturing facilities to produce face masks back when they were in high demand, and we've also introduced some new and exciting products to help keep spas – and spa workers – safe during these times. And our touchless technologies, which have been helping spas turn a higher profit and utilize different spaces for years now, have found a whole new audience in the wake of Covid-19 (see page 8)

We've also taken to science to look at the ways in which some of our best-selling specialized products can help calm the body's nervous system and help with inflammation – I think you'll be interested to see the initial results in our article on page 12.

While a vaccine on the horizon promises hope of things returning to something of a new normal, we know that it will be quite some time before things will be back to what they were, and that this virus has left its mark on us indefinitely. I hope you'll find this edition of our magazine useful in finding out how we can help your spa in these trying times, and I also hope you'll find inspiration in our highlights of some of our prestigious new clients from around the world. For now, I hope you all stay safe, healthy and happy, and I send you all the best for a wonderful 2021!

*Sammy Gharieni*



12



16



22



14



18



24

# CONTENTS 01/2021

## 03 EDITORIAL

A year of challenges

## 06 NEWS

The MLW NEO makes its debut

## 08 HIGHLIGHT

Touchless treatments

## 10 INSIDE

A new Gharieni operational showroom opens at the Park Hyatt Dubai

## 12 SPECIAL

Verified wellness: a new study reveals the efficacy of the Spa.Wave and Quartz tables

## 14 PROJECTS

Johnstown Estate  
Quellenhof Luxury Resort  
Chateau de la Gaude  
Eden One  
Hyatt Zilara Cap Cana  
W Amman

## 22 PRODUCTS

The new 601 Hybrid:  
multifunctionality at its best

## 24 PROJECTS

Dr Jorjani Aesthetics  
Reischlhof Wellness Hotel  
MED-hub

### PUBLISHING INFORMATION

Gharieni Magazine Edition 1/2021, 8. Jg.  
Customer magazine of the Gharieni Group  
Address: Gutenbergstr. 40, D-47443 Moers

[www.gharieni.com](http://www.gharieni.com)

CEO: Dipl.-Ing. Sammy Gharieni  
(responsible editor), Gharieni Group

Editorial and graphic design/layout:  
Jane Kitchen Communications  
Title: Gharieni Group

All rights reserved, including translation and other use.  
Reproduction, in whole or in part, only permitted with  
the permission of the Gharieni Group with indication  
of the source. No liability is accepted for unsolicited  
sent manuscripts, photos and review copies.

# SLOW AGING

A SEVEN-DAY POWER TREATMENT SERIES AGAINST SKIN AGING



*+90% volume*

GOLD VOLUME  
AMPOULE

*-93% wrinkles*

PLATINUM LIFT  
AMPOULE

*+100% energy*

ROSE GOLD ENERGY  
AMPOULE

## DIE PRECIOUS COLLECTION

The process of skin aging begins in the cell. The Precious Collection from BABOR is designed to effectively counteract evolutionary cell degradation at precisely the point where the skin's natural maturing process begins. The revolutionary seven-day ampoule power treatment series is based on highly concentrated active formulas. In just three phases, it delivers visibly plumped, intensively toned, and youthfully radiant-looking skin.

**BABOR**

ASK FOR *more.*

\*CONSUMER PERCEPTION SCORE BASED ON SELF-EVALUATION BY 42 WOMEN AFTER ONE WEEK OF TREATMENT WITH BABOR'S PRECIOUS COLLECTION AMPOULES AND REVERSIVE CREAM.



The MLW NEO features intuitive handling

## Introducing the new Gharieni MLW NEO

The latest spa table from Gharieni is the MLW NEO, and as the name suggests, the table offers many new and exciting features. The MLW NEO is the latest development of the MLW Classic, and replaces the top-seller in the company's portfolio.

The handling of the new table is a major milestone in Gharieni's product development; the hand switch, which features the latest Gharieni double-click technology, can be controlled intuitively and, just like the foot control, can be plugged in on both sides of the treatment bed. This ensures much more flexibility in operation and can be set up individually

according to the therapists' needs. Thanks to the easily accessible connections, the hand and foot switch can be retrofitted at any time if required. The integrated heating system of the upholstery is also controlled via the easy-to-use hand or foot switch unit.

To ensure optimum safety, the spa table has an automatic locking function, which is activated after 30 minutes. The new MLW NEO features horizontal stripes on the base, in contrast to the waves of the MLW Classic. Like the MLW Classic, the MLW NEO is available with standard upholstery as well as with NEO SOFT, which features extra-soft upholstery.



## New Arabic website

We are proud to announce that our website is now also available in Arabic. Thanks to the support of Gharieni Middle East, we are expanding our service to nearly 300 million Arabic speakers worldwide.

**Visit us at [www.gharieni.ae](http://www.gharieni.ae)**



## 3 YEARS FORBES TRAVEL GUIDE

For the 3rd year in a row, the Gharieni Group has been selected as Forbes Travel Guide Brand Official. Gharieni was chosen as the Official "Spa & Wellness Equipment Manufacturer" for *Forbes Travel Guide*, the global authority on luxury travel. Selected to represent the best products and services in the luxury hospitality industry, Gharieni embodies the core values and exacting quality standards demanded by FTG, the only independent, global rating system for luxury hotels, restaurants and spas.

## The new RLR outstanding comfort and design



The soft upholstery of the new RLR impresses with its excellent comfort and a durable, water-repellent cover with a pleasant feel. The ergonomic shape and the optional flexible reading

lamp make the RLR a first-class relaxation furniture for exclusive spas, resorts or hotels.

With its modern design and many colour variations, it fits perfectly into your spa ambience.

## MLX i<sup>3</sup>Dome wins Product Award as “Most innovative Product”

We are delighted to win the Product Award of the renowned Spa & Wellness Mexicaribe magazine in the category “Most innovative Product” and would like to thank the jury and all those involved.



Learn more at [gharieni.com/mexicaribe-product-award](http://gharieni.com/mexicaribe-product-award)

## Gharieni Plexi Shield

The Gharieni Plexi Shield is an ideal solution to meet strict hygiene requirements while working on facial treatments. The thermoformed and ergonomic Gharieni Plexi Shield can be easily attached to the metal frame under the headrest of all Gharieni spa tables from the series MLW and MO1. The direct connection to the frame ensures maximum leg space for the therapist while working on the head section.

The direct connection to the frame also makes any additional height adjustment unnecessary, as the shield automatically adjusts to the height of the spa table. The depth (distance between headrest and Plexi Shield) is also adjustable. While not in use, the shield can be detached and stowed easily so that it doesn't waste space in your treatment room.

The Gharieni Plexi Shield can also be fitted with optional built-in LED lights, which are integrated in the Plexiglass, making the entire system easy to clean and disinfect. The Plexi Shield set includes the Plexiglass shield, two rails and fixtures for easy assembling.



The Plexi Shield attaches to the headrest

# Touchless Treatments

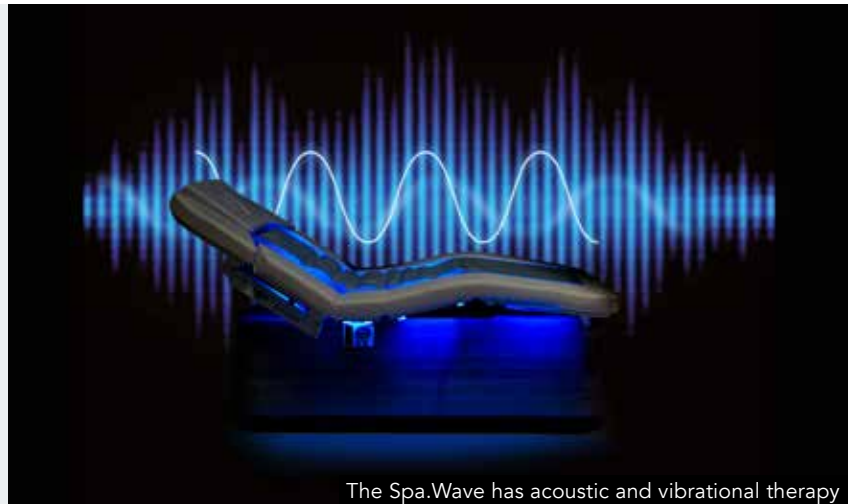
Gharieni offers some of the most innovative touchless technologies on the market, which allow for quality treatments with limited person-to-person contact – something guests are looking for in the wake of Covid-19

Touchless technology means several clients can be served by one therapist, and has huge potential to help spas be more successful. Specialised touchless treatments allow spas to offer exceptional experiences while still delivering on strict hygiene regulations, and maximise both the guest experience and the spa's profit. Touchless treatments can also be combined with traditional treatments like facials, pedicures or manicures to make the experience more enjoyable for the guest while increasing earnings per hour. Spa operators can also create their own protocols using touchless technologies combined

with these treatments, which will make their offerings more unique. These offerings can turn simple treatments into a complete experience; for example, you can combine a manicure or pedicure with the Spa.Wave System, which makes the treatment infinitely more relaxing. Or a facial can be combined with the MLX i³Dome for a pure infrared treatment. The possibilities are endless, and can help relieve therapists while also giving each spa the scope to develop their own signature treatments, making their spa menu more interesting and raising their earnings per hour. ***Some of the newest Gharieni touchless products include:***

## The Gharieni Spa.Wave

The Gharieni Spa.Wave is a computer-controlled acoustic and vibrational therapy that trains the brain to relax and benefit from deep relaxation techniques. Using specific vibrations and binaural audio frequencies, the Spa.Wave System makes it possible for busy minds to achieve deep levels of relaxation in a 30- or 60-minute therapy session while lying on a heated water cushion. During the treatment, built-in transducers act on the body through gentle vibrations, while binaural sound compositions slow the brain waves via stereo headphones. After a treatment the client feels relaxed and the body clock is adjusted.



The Spa.Wave has acoustic and vibrational therapy





CELLISS is a unique slimming machine

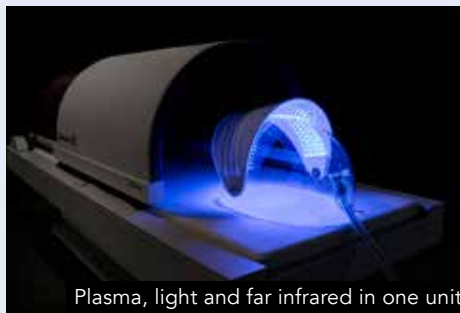
## Gharieni CELLISS

CELLISS is a unique slimming machine based on the patented Total Slimming System (TSS), a non-invasive aspiration/percussion process that simultaneously treats thighs and hips, as well as buttocks or abdominals, depending on the prone position. After the client is lying comfortably on the Gharieni CELLISS, individual programs can be started at the touch of a button, with each one customized to the client's needs – once the treatment is underway, it does not require any further intervention from therapists. The Gharieni CELLISS helps to reduce the orange-peel effect, while slimming and shaping thighs, redesigning the silhouette and smoothing the skin's texture.

## Triple Detox Therapy MLX i<sup>3</sup>Dome

The award-winning, Triple Detox Therapy MLX i<sup>3</sup>Dome combines Far Infrared Technology (FIR) with plasma and light to offer three ultra-effective detox treatment methods in one. Once the client is safely seated, the dome is closed and the PLT device is positioned over the head.

From that point, the MLX i<sup>3</sup>Dome operates completely independently. While Gharieni FIR-technology stimulates and warms the body with long-wave infrared rays through the MLX iDome, the additional Plasma- and Light-Therapy device (PLT) at the head section provides visible skin rejuvenation and detoxification after a few sessions.



Plasma, light and far infrared in one unit



The MLX Quartz can be used without a therapist

## The MLX Quartz

The MLX Quartz treatment bed can also be offered as a touchless treatment. In addition to the optional scent diffuser, which activates the olfactory senses, the dynamic flow system offered as an option on the MLX Quartz is an alternative to full-touch treatments. The system simulates a massage with wave-like movements in the back area. The client is cocooned in warm quartz and cosy linen and enjoys the gentle massage without the touch of a therapist even in a zero ,gravity position.

# New Dubai office & operational showroom

**Gharieni opens Middle East operational showroom at the Park Hyatt Dubai**

**Gharieni Middle-East FZ-LLC**  
 Park Hyatt Hotel  
 Dubai Creek Club St.  
 P.O. Box 333203  
 Dubai U.A.E.  
 Phone: +971 4 602 1819  
 Email: info@gharieni.ae  
 Website: www.gharieni.ae

**L**ocated in Dubai Creek Golf & Yacht Club, Park Hyatt Dubai is a luxury resort with several award-winning restaurants and a destination spa. Set amid private courtyards, the resort's Amara Spa will now also serve as the operational showroom for Gharieni in the Middle East.

The spa includes ten treatment rooms and three couple's suites, and is equipped with a full range of Gharieni's equipment. Much like in Gharieni's US showroom at the JW Marriott Turnberry Isle in Florida, potential clients can visit the spa to try out all that Gharieni has to offer in a real-world luxury spa setting.

Gharieni has created an experience circuit that showcases its latest tables and treatments, including highlights like the MLX i³Dome, the Spa.Wave and the Quartz table – all technologies best experienced in person.



A full range of Gharieni equipment is featured



"So many of our products have so much to offer that it really helps to see them in a spa setting to get the full experience," says Gharieni Founder Sammy Gharieni. "From the healing warmth of the warm Quartz crystals to the relaxing vibes of the SpaWave, our equipment uses all the senses, and having them available in a beautiful setting like the Amara Spa really gives customers and clients alike a truly one-of-a-kind experience."

Amara Spa offers a spa concierge, who can customise spa treatments for guests, using ancient healing philosophies derived from the natural elements of sapphire, ruby, emerald and diamond, each of which has its own spiritual and physical benefits. The spa uses products from Natura Bissé and Anne Semonin, and also offers Arabian teas and authentic delicacies to complete the experience.



The Amara Spa is set in a private courtyard

A woman with her eyes closed and a serene expression is lying on a white spa table. Her head is tilted back, and her hair is pulled back. A pair of hands is gently massaging her forehead and temples. The background is a soft, out-of-focus white, suggesting a clean and relaxing spa environment.

Natura Bissē  
Barcelona

# WORLD'S BEST SPA BRAND

2018, 2019 & 2020

DISCOVER WHY AT  
[NATURABISSE.COM](https://www.naturabisse.com)

# Verified wellness

A new scientific and clinical study takes a look at how Gharieni concept beds positively impact the nervous system.

Gharieni Group has undertaken a new study on two of its bestselling spa treatment concept beds, the SpaWave System and the MLX Quartz, to scientifically prove the reliability and efficacy of the beds and examine their positive impact on the Autonomic Nervous System (ANS) and its anti-inflammatory properties. It's the first time that a company that manufactures spa beds and spa equipment conducts such a study in our industry.

The ANS is a mostly unconscious system that is responsible for regulating bodily functions, including heart rate, digestion, and respiratory rate, and is also the primary mechanism in control of the body's fight-or-flight response.

The new study, designed by researcher Sergio Pecorelli, MD, Ph.D, an expert in the field of early human development, and in collaboration with the First 1000 Days of Wellness®, examines the effects on the ANS before and after treatments in the Gharieni beds. The study also looks at whether the treatments created an anti-inflammatory effect on the system.



SPA.WAVE



PSAMMO  
THERAPY

The Spa.Wave uses binaural sound therapy



Alina Hernandez, co-founder of the First 100 Days of Wellness®, and Dr Sergio Pecorelli coordinated the study

“We know from listening to our customers that our beds create a profound sense of relaxation, and that the SpaWave, with its acoustic and vibrational therapy, and the Quartz table, with the cocooning effects of the warm sand, affect both physical and mental relaxation,” says Sammy Gharieni, CEO & Founder of Gharieni. “We set out to explore this with a scientific study that we hope will prove the positive effects on the body’s nervous system, and which we also hope will be useful for spas in communicating with their customers.”

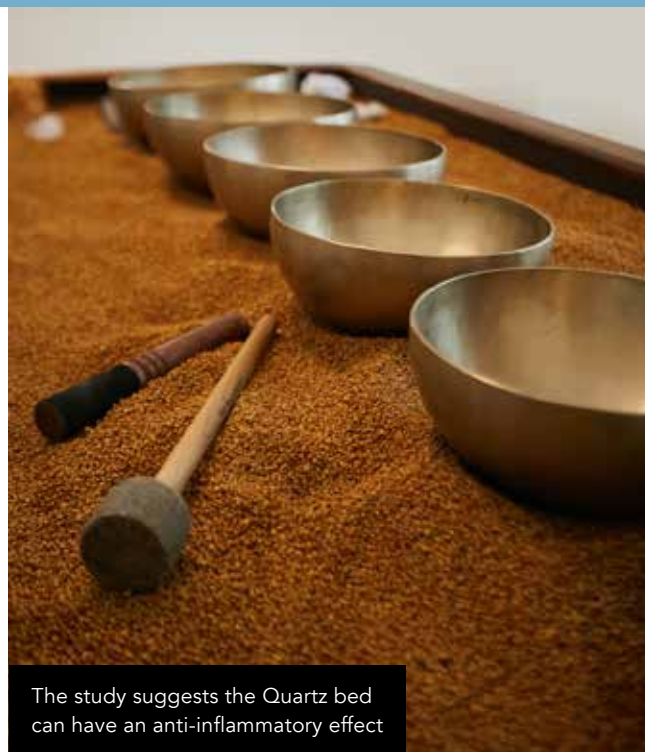
The first part of the study involved a ‘closed environment,’ made up of Gharieni employees and their friends and families. A total of around 55 people have participated in non-invasive tests, which take about five minutes before and after the treatments and measure the three main components of the ANS before and after treatments.

A second part of the study will take place in an ‘open environment,’ which means participants will be tested in the actual real-world environment or spa where they might normally receive the treatments.

“Our findings so far indicate that these two Gharieni beds are definitely positively impacting the ANS and providing an anti-inflammatory effect on the participants that have been tested,” says Alina Hernandez, co-founder of the First 1000 Days of Wellness® and coordinator of the study.

After the study is complete, final results will be prepared by Dr. Pecorelli, and the plan is to publish the findings in collaboration with the First 1000 Days of Wellness®.

**Gharieni takes Wellness to a Verified Level ...**



*“We know from listening to our customers that our beds create a profound sense of relaxation”*

# PROJECTS

## The Johnstown Estate

Johnstownbridge, Ireland

Flagship Irish spa for Gharieni and Elemis

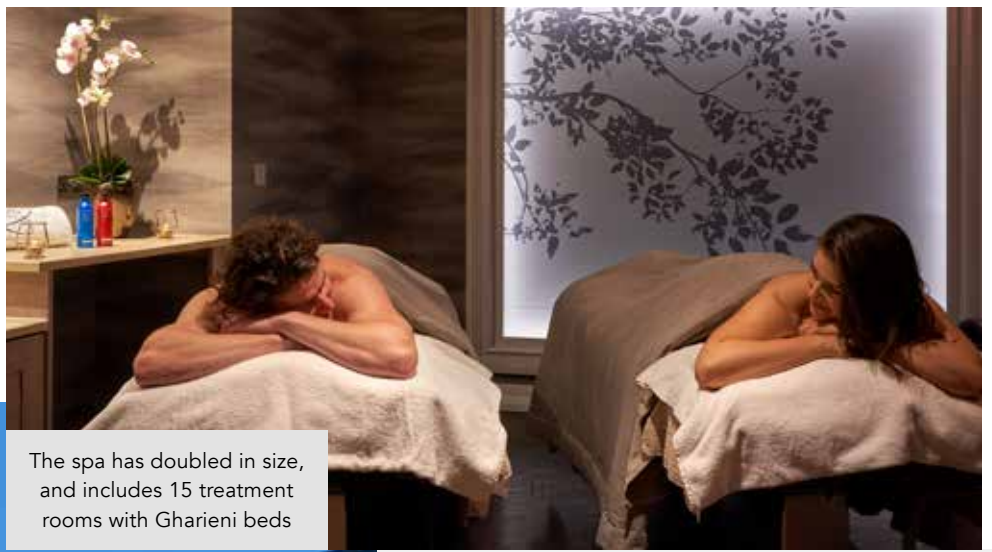
The Johnstown Estate has invested €3.5 million in creating a new spa experience that is nearly twice the size of the existing spa, and which will be the Irish flagship spa for Gharieni and British skincare brand Elemis.

Opened in November 2020, The Spa at The Johnstown Estate has been completely remodeled and expanded, is now approximately 1,300 m<sup>2</sup> and includes a Rooftop Experience and a Thermal Suite, and 15 treatment rooms, including a Rasul Mud and Mineral Treatment Bath and a Couples Room.

New cutting-edge technology has been installed, including psammotherapy with Gharieni's MLX Quartz bed as well as aqua therapy with Gharieni's Libra, plasma and light treatment technologies with the Gharieni MLX i<sup>3</sup>Dome, and sound wave therapies with the Gharieni Spa.Wave System.

The Spa at The Johnstown Estate was conceived by Millimetre Design, which created the hotel's Fire & Salt Restaurant, The Coach House Brasserie, The Atrium and many of the other lovely spaces at The Johnstown Estate.





The spa has doubled in size, and includes 15 treatment rooms with Gharieni beds

The new spa includes a Rooftop Experience and cutting-edge technology from Gharieni





The luxury spa features Gharieni's MLW F1 and Lina Select Alu treatment beds

Pictures © Alexander Haiden/Qualitatis/Luxury Resort Lazio





## Quellenhof Luxury Resort Lazise

Lake Garda, Italy

Five-star luxury in the Italian Dolomites

The 5-star Quellenhof Luxury Resort Lazise in Lake Garda, Italy, is the second resort from Quellenhof, following on from their successful location in South Tyrol. The newly built resort features a 2,000-square-metre spa with three pools, an organic swimming lake, five modern saunas, five treatment cabins, a hairdresser, and a private spa suite. The Onda Spa includes Gharieni's MLW F1 treatment beds, which offer a compact base for more leg space, as well as the new Lina Select Alu soft treatment bed, with a slim, elegant design.

Situated on the southeastern shore of Lake Garda, the Onda Spa has been inspired by the dynamic balance of waves, which learn to continually replenish their energy reserves. The harmonious fusion of landscapes – the clear blue waters of Lake Garda and the green of the Garda Mountains towering over the northern shore of the lake – make it a perfect place to unwind and recharge.

The Onda Spa experience is about balance, wellness and beauty, and the belief that outward beauty radiates from inner harmony. The spa is designed to be a haven of peace and relaxation where guests can attune to the flow and regenerate energy from within. With its modern design, high-tech saunas and expansive relaxation rooms, it embodies an innovative concept developed to bring clarity, relaxation and inspiration.

The 18th century hotel is nestled in a green haven in the heart of Aix en Provence

## Château de la Gaude

Aix-en-Provence, France

A soothing escape in the heart of Provence



Château de la Gaude, an 18th-century Provençal bastide nestled in a green haven in the heart of Aix en Provence, opened its doors in 2019. The man who dreamed of reviving this sleeping beauty of an estate has successfully transformed it into a unique place of life and conviviality, promoting a certain “art de vivre” around the worlds of wine, art and gastronomy.

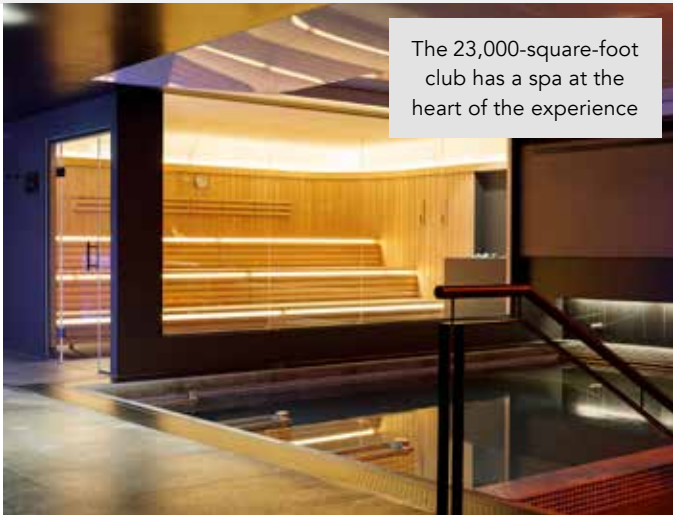
Located in the northeastern Pinchinats district, just ten minutes from the city centre of Aix-en-Provence, the estate offers a breathtaking view of Montagne Sainte-Victoire, the ultimate symbol of Provence. The district has a rich history, and its water source was first discovered in the 12th century.

The on-site spa is a soothing escape between serenity and enchantment dedicated entirely to well-being. The spa features five Gharieni MO1 treatment beds, and offers exceptional face and body care using the prestigious Swiss brand Valmont.





The spa includes Gharieni MO1 beds



The 23,000-square-foot club has a spa at the heart of the experience



The spa features Gharieni Evo loungers

## Eden One Dublin, Ireland

Luxury and relaxation at Dublin's newest health club

Eden One is setting unparalleled standards as Dublin's newest health club, destination day spa and private member's club. The 23,000-square-foot premier club includes Eden Elements, a spa at the heart of its experience.

The spa is open to external guests for treatments and packages and is centred around the eight elements: earth, air, water, fire, dark, light, ice and nature. The spa includes Gharieni MO1 treatment beds as well as Evo loungers.

Boasting a stunning thermal suite over two floors, guests can enjoy key features such as an infinity edge swimming pool, an invigorating vitality

pool separated by a ribbon of dancing fire, a panoramic pool view sauna, a dry salt inhalation relaxation room, a steam room, infrared heated marble loungers and the latest technology snow shower.

In addition to this, Eden Elements has forged a partnership with premium skincare treatment brand Natura Bissé to curate tranquil spa packages and treatments for an unforgettable day of luxury and relaxation.

Eden One also includes a 7,500-square-foot gym with the latest Technogym strength and cardio equipment from their Artis range, as well as visually stunning Mind & Body, Cycling, and High Energy studios.



The spa has been inspired by a cenote

## Hyatt Zilara Cap Cana

### Cap Cana, Dominican Republic

All-inclusive resort with cenote-inspired spa

Situated on 40-acre beachfront property on picturesque Juanillo Beach, the 375-room Hyatt Ziva Cap Cana and 375-room Hyatt Zilara Cap Cana resorts are nestled on the eastern shores of the Dominican Republic, with two miles of spectacular white sand beaches, a protected harbor marina, and an award-winning golf course. The new resorts promise a tropical paradise where guests are inspired to reconnect with loved ones, enjoy time away from their busy lives, and experience the most unique aspects of the Dominican Republic.

The Hyatt Zilara Cap Cana features an elevated fitness center modeled after a traditional rum distillery, and the world-class Larimar Spa. The spa is inspired by a cenote and includes a cascading waterfall within the hydrotherapy pool, as well as a larimar stone-infused sky-lit lagoon, the Dominican Republic's first Himalayan Salt Lounge, and a Gharieni MLX Quartz table.

Designed by architect Ken Shannon, Hyatt Ziva Cap Cana and Hyatt Zilara Cap Cana shatter the expectations associated with traditional all-inclusive resorts by evoking a premium experience and thoughtful touchpoints. Hyatt Ziva Cap Cana and Hyatt Zilara Cap Cana offer individual resort experiences, each with a distinct personality that caters to travelers seeking an adult escape or multigenerational experience.



The spa features the area's first Himalayan Salt Lounge and a Gharieni Quartz table



A cascading waterfall within the hydrotherapy pool adds a special touch



The AWAY Spa offers soothing foot treatments with Gharieni Pedi Spas



Design has been inspired by the energy of the Middle East

# W Amman

Amman, Jordan

Contemporary hotel with stunning views of the capital city

The 280-room W Amman is the brand's first property in Jordan, and is located in the heart of Amman's up-and-coming new downtown neighborhood, Abdali. The hotel features design inspired by the energy of the Middle East and charm of Jordanian

The W Amman stands tall as a contemporary and unmistakable architectural statement, offering stunning views of the bustling city's seven hills running across the Jordanian capital. Stepping into the Welcome area, the hotel's façade invokes the unique and colossal beauty of Petra's rock formations, reminiscent of the Nabatean city's

striking appearance, one of the new Seven Wonders of the World. Throughout the Canyon Walk, guests are enveloped in a modern design marvel, reinterpreting the natural beauty of Petra's canyon with shard structures and natural tones that can also be seen throughout the hotel.

For guests to refuel and reinvigorate, the AWAY Spa at W Amman offers massages, body treatments, facials and quick fixes promising look good/feel good experiences in a fun, yet relaxed setup. The spa includes eight Gharieni PediSpa units, as well as an SPL Soft, a fully electric table for multifunctional treatment rooms.



The W Amman stands tall as a contemporary architectural statement



MULTIFUNCTIONALITY AT ITS BEST

## The Gharieni 601 Hybrid

The Gharieni 601 is a multifunctional hybrid unit that combines the best features of a spa table and a beauty chair in one. With its completely redesigned concept, the Gharieni 601 offers perfect ergonomics for any treatment. As the name suggests, the 601 is a true 6-in-1, multi-talented unit that can be used for facials, pedicures, manicures, massages, makeup application and haircare, thanks to its ability to its metamorphic abilities and its extremely flexible arm and head sections.

The solid double lifting column technology ensures a safe stand and provides the basis for this extraordinary treatment table. The swivelling side armrests ensure quick and easy access from the side by simply folding down and pushing them under the table surface. The armrests can also be completely removed if needed for a massage treatment.

The fold-away headrest, which is available in three different versions, provides easy access to the head and neck for hair care.

The Gharieni 601 has four preset memory positions; two more positions can be stored easily. A simple hand or foot switch is used to operate the electric operation spa table, and an optional smartphone app is also available, with which all functions of the handset can be operated. A variety of holders for magnifying lamps or manicure bowls underline the functional design and make everyday work easier.

With the optionally integrated Smart-Thermo heating system and a wide range of upholstery and metal colours, the Gharieni 601 offers all the advantages of a Gharieni spa table. The upholstery of the Gharieni 601 is available as standard and soft upholstery in three different widths.

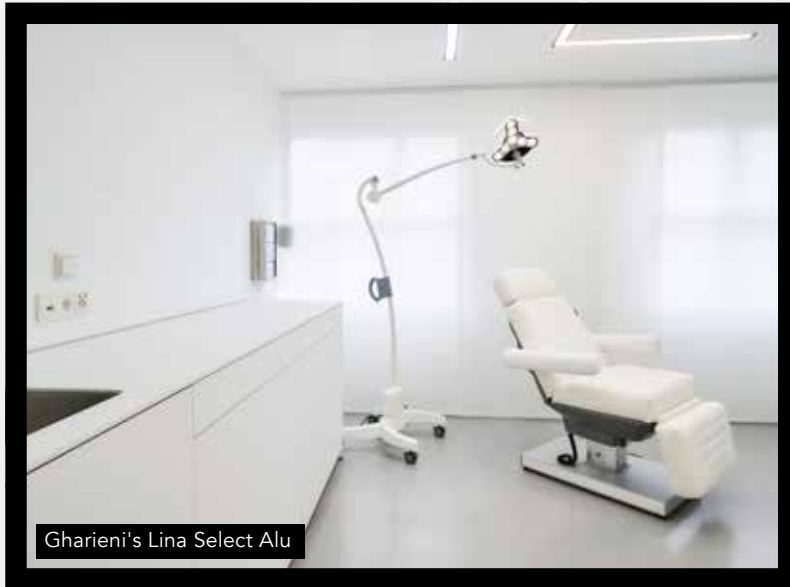
*The 601 can be used for facials, pedicures, manicures, massages, makeup application and haircare, thanks to its metamorphic abilities*





The 601 is a true 6-in-1, multi-talented unit





Gharieni's Lina Select Alu



## Dr. Jorjani Aesthetics

Holistic aesthetic treatments in Bonn

Dr Jafar Jorjani is a specialist for plastic and aesthetic surgery located in Bonn, Germany, with more than 10 years of experience. Dr Jorjani focuses on holistic treatments of the face and body, including Botox treatments, liposuction and filling treatments.

The pursuit of beauty is also expressed in the design of the interiors, which follow a modern design, with Gharieni's Lina Select Alu Supersoft treatment beds featured in the treatment rooms. When planning the practice, Dr Jorjani wanted to create rooms never before seen in Bonn, with an atmosphere that did not feel like a typical doctor's office. The design uses polished floors, honey-stained oak, organic green elements and glass.



Dr Jafar Jorjani focuses on holistic treatments





## Reischlhof Wellness Hotel

Wegscheid, Germany

Luxury wellness in the Bavarian forest

Only 45 minutes from the Austrian city of Linz, the Reischlhof is in a secluded location in the middle of the Bavarian Forest. The 4.5-star hotel features more than 5,000 square meters of wellness, including an extensive sauna area, 19 different relaxation rooms, various indoor and outdoor pools, and a wellness garden.

A highlight at the Reischlhof is the panorama sauna on the sun roof, where guests can experience event sauna infusions composed by the resort's sauna masters, as well as a magnificent view of the Bavarian Forest.

The resort's spa features a wide variety of Gharieni products, including nine MLW Soft treatment beds, three MLW Classic beds, one MLW F1 Soft bed, two SPL Soft beds, an SPL Podo Soft, and a Lina Select Alu Podo. A wide range of treatments is available at the spa, including massages, peels and facials, as well as Ayurveda treatments.



The hotel has 5,000sq m of wellness



MED-hub is a multifaceted clinic

## MED-hub Zurich, Switzerland

A modern clinic in  
the heart of Zurich



At the newly opened MED-hub in Zurich, clients meet with top doctors and therapists and enjoy individualized service tailored to their needs. Located on the 4th floor of the Hirslanden Ärztezentrum Seefeld, MED-hub offers a comprehensive and transparent approach to treatments.

Clients benefit from renowned and experienced medical specialists from various fields, including dermatology, gastroenterology, gynaecology, senology, oncology, psychiatry, pharmacogenetics and plastic surgery – all under one roof. The Hirslanden Ärztezentrum Seefeld provides a highly modern infrastructure and expertise with a close and direct connection to the Hirslanden clinic.

A modern and multifaceted clinic, MED-hub has a unique ambiance with classy interiors, and features Gharieni's MLW F1 Soft treatment beds, as well as two Gharieni Lina select wood treatment beds.

# TAKING WELLNESS TO THE NEXT LEVEL

## GHARIENI FLAGSHIP SPAS



**Bergamos Retreat**  
Friendswood, USA



**Aether Institute**  
Prague, Czech Rep.,



**The Lamp Hotel**  
Norrköping, Sweden



**La Butte aux Bois**  
Lanaken, Belgium

**The Johnstown Estate**  
Johnstownbridge, Ireland

**GHARIENI**  
www.gharieni.com